





WHO WE ARE

SHANDONG BIOARCTIC COOLING EQUIPMENTS CO LTD is a manufacturer located in Jinan city, Shandong province, China. We produce all types of cooling pads in high quality 100%. As well we have 15 years of exporting cooling pads system to the Middle East, the Americas, and European countries. Our main product is SNOW MAN HOUSE (SHM) which is Aspen wood wool cooling pads.



WHAT IS THE SMH PADS

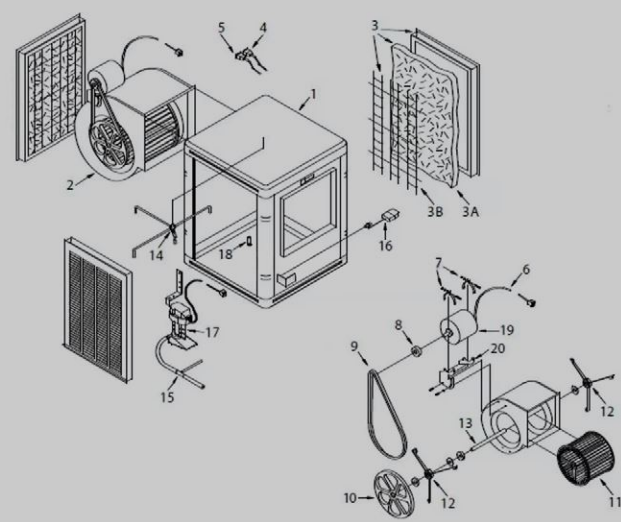
Cooling Pads which called in our factory Aspen wood wool cooling pads are an essential part of an evaporator air cooler. The air cooler works by chilling the outside air as it passes through these water-saturated cooling pads, causing the water to evaporate with the passing dry air. Air coolers play an essential role in delivering continual natural and energy-efficient air cooling.





FOR WHAT USING THE SMH PAD

The back and side walls of the cooler are lined with a sheet-like material called cooling pads. Its only purpose is to hold water and provide surface area for evaporation. The water pump draws water up and drops it on the top of the cooling pads. This water makes the pads wet and water is retained by the cooling pads. When the powerful fan of your air cooler is turned on, air flows through these pads leading to water evaporation and resulting in cool and humid air. The air that enters the house cools down the overall area. The cooling pads also act like a water curtain and filter the air by trapping dust particles on its wet surface thus providing fresh air inside.





WHAT ARE THE ADVANTAGES OF OUR PRODUCTS

- Our products are made of Aspen wood which is more effective in low humidity conditions.
- Our products give a decent and sufficient cooling performance, which is one of the best features of wood wool cooling pads.
- The main advantage of our Aspen wood wool cooling pad is the cost-effectiveness of these pads, which makes your cooler economical.
- Our products give a fresh fragrance like that of raindrops on a hot summer day.





MATERIALS

- Serbia

- Polypropylene Netting

- Polypropylene Stitching Thread





DESCRIPTION

SNOW MAN HOUSE Pads Individually Packaged Cooler Pads are manufactured from Great Lakes Aspen, which are the cleanest, toughest, and most consistent fibers available for evaporation cooling and are stitched together to prevent sagging. SMH Pads come in a wide variety of sizes to fit all coolers. SMH Pads are individually packaged in compressed bundles and in master bundles. Product shall be manufactured in the China.

Min.		Max.		Weight Per (msi - 1b / m²- Kg)
Width (in / cm)	Length (in / cm)	Width (in / cm)	Length (in / cm)	
14.0/ 35.6	16.0/ 40.6	38.0 / 96.5	60.0/ 156.4	2.0 / 1.4

Fiber	Serbia
	Curled, interlocking fibers with barbed edges
Fiber Size	80% of fibers a minimum of 6.0" (15.2 cm) long
	0.018"±0.003" wide x 0.038" ± 0.008" thick
	(0.46 mm ± 0.08 mm wide x 0.97 mm ± 0.20 mm thick)
Pad Width	- 0" (cm), + 0.5" (1.3 cm)
Pad Length	- 0" (cm), + 1.0" (2.5 cm)
Weight*	±10% @, 22% Moisture
Water Absorption	250% ± 25%
Stitching Thread	620 Denier Polypropylene
Stitch Pattern	Stitching Applied to Middle and Edges of Pad
Netting	Polypropylene, white
Netting Opening Size	5/32" wide x 5/32" long (4 mm wide × 4 mm long)
Netting Configuration	Totally encased



CONTACT US

 **CALL US**

+8653187482137 +8653187481137 008618503117132 008618560035772

 **OUR EMAIL**

sales@bioarctic.cn.com

 **OUR LOCATION**

Shandong Bioarctic Cooling Equipment Co., Ltd. No. 21-1, Wuzhuang county, Zhangxia street, Changqing District, Jinan City, Shandong Province, China.

